

# American Business Center I & II

2960-2970 Judicial Road | Burnsville, MN

FOR LEASE | OFFICE/WAREHOUSE



## Highlights

### Building I

- 1,068 – 4,642\* RSF Office 2<sup>nd</sup> Floor
- 2,018.5\* SF Climate Controlled Warehouse Available with New Office Lease (30-day notice)

### Building II

- 1,470\* RSF Office 2<sup>nd</sup> Floor

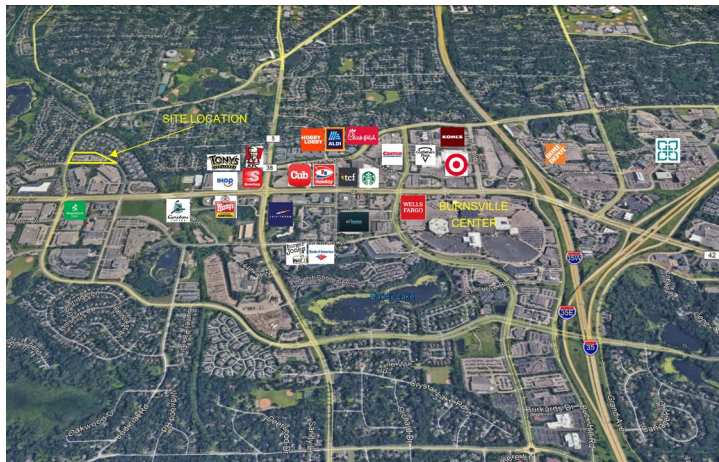
Common Conference Room

Warehouse 21'-6" Clear Height

High Office Ceilings

Located on the Corner of Burnsville Parkway & Judicial Road / 2 Blocks North of County Road 42

## Surrounding Area



### Average Daily Traffic Volumes:

- County Road 42: 38,000 VPD
- Burnsville Parkway: 8,600 VPD
- Combined: 46,600 VPD
- 2 Miles from I-35 split / 5 miles from Hwy 169

### Demographics

Miles	1	3	5
Population	11,125	66,150	159,712
Avg Income (\$)	94,491	96,607	110,008
Households	3,855	25,195	60,963

High Visibility

High Traffic

High Demand

For more information, please contact:

EFH Realty Advisors, Inc.  
952-890-6450

**Susan Whalen**  
susan.whalen@efhco.com  
Broker

**Jodi Walfoort**  
jwalfoort@efhco.com  
Associate Broker

Phone: 952-890-6450 | Fax: 952-890-5476 | Web: efhco.com  
2999 W. County Rd. 42, Suite 206, Burnsville, MN 55306



REAL ESTATE | CONSTRUCTION | PROPERTY MANAGEMENT

All information herein has been provided by sources we deem reliable. It is provided without any representation, warranty, or guaranty. Prospective Tenant should conduct any investigation and verification it deems material. Consult your accountant, attorney, or other professional advisors.

# American Business Center I & II

2960-2970 Judicial Road | Burnsville, MN

FOR LEASE | OFFICE/WAREHOUSE

## Year Built / Renovated:

- 2007

## Floors:

- 2

## Total Buildings Rentable Area:

- 50,400 SF

## Suites Available:

\* Includes a 10% CAF

- Building I (2970 Judicial)
  - 1,068 – 4,642\* RSF Office 2<sup>nd</sup> Floor
  - 2,018.5\* SF Warehouse Available with New Office Lease (30-day notice)
    - High Bay (21' – 6" Clear Height)
    - Climate Controlled
    - 1 Drive-in / 2 Docks
- Building II (2960 Judicial)
  - 1,470\* RSF Office 2<sup>nd</sup> Floor

## Net Rate (\*annual escalations):

- Negotiable, NNN

## Operating Expenses & Real Estate Taxes:

- Building I \$5.67 per SF, 2023 estimated
- Building II \$6.67 per SF, 2023 estimated (excludes metered utilities, phone, cable, internet, janitorial)

## Lease Term:

- Negotiable / 5+ Years Preferred

## Parking:

- 100 Shared Surface Parking Spaces

## Fire / Life / Safety

- Wet Fire System

## Zoning:

- I-3 Office and Industrial Park

## Building & Roof Construction:

- Pre-cast / Steel Truss Building
- Built-up Roof
- Floor Thickness: Office – 4" / WH – 5"

## HVAC:

- Office: Rooftop Mounted HVAC Units
- Warehouse: HVAC RTU's

## Utility Services:

- Dakota Electric / Center Point Energy
- Century Link / Comcast

## Electrical:

- 120/208 / 3 Phase

## Building Amenities:

- Building / Monument Signage Available
- Common Conference Room

## Area Amenities:

- Minutes to I-35 Split
- Close to Employee Base, Restaurants, Retail, and Services
- Just A Few Miles East of Hwy 13



Phone: 952-890-6450 | Fax: 952-890-5476 | Web: efhco.com  
2999 W. County Rd. 42, Suite 206, Burnsville, MN 55306

REAL ESTATE | CONSTRUCTION | PROPERTY MANAGEMENT

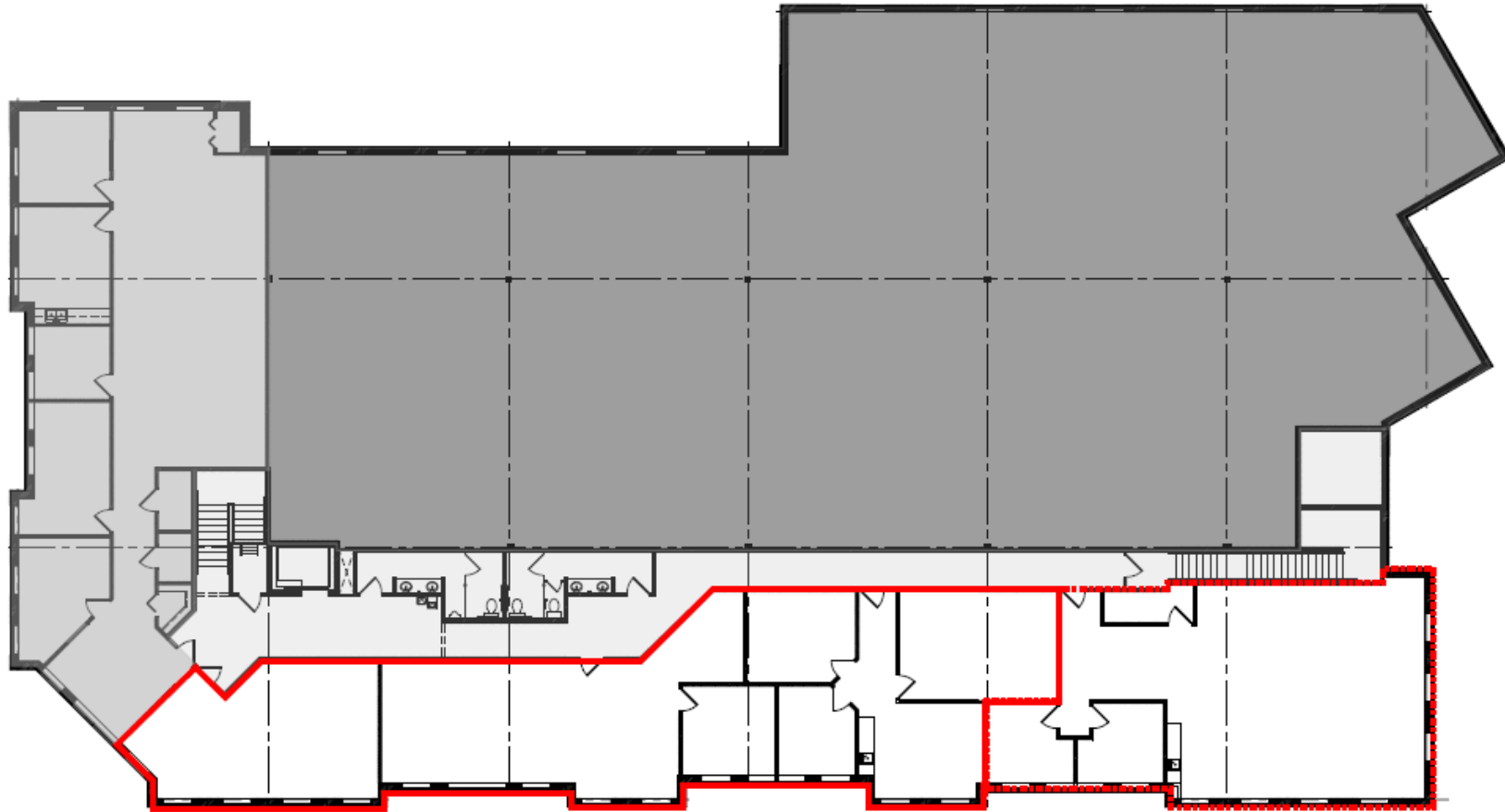
All information herein has been provided by sources we deem reliable. It is provided without any representation, warranty, or guaranty. Prospective Tenant should conduct any investigation and verification it deems material. Consult your accountant, attorney, or other professional advisors.

# American Business Center I & II

2960-2970 Judicial Road | Burnsville, MN

FOR LEASE | OFFICE/WAREHOUSE

## 2970 Judicial 2<sup>nd</sup> Level Plan



Phone: 952-890-6450 | Fax: 952-890-5476 | Web: [efhco.com](http://efhco.com)  
2999 W. County Rd. 42, Suite 206, Burnsville, MN 55306

REAL ESTATE | CONSTRUCTION | PROPERTY MANAGEMENT

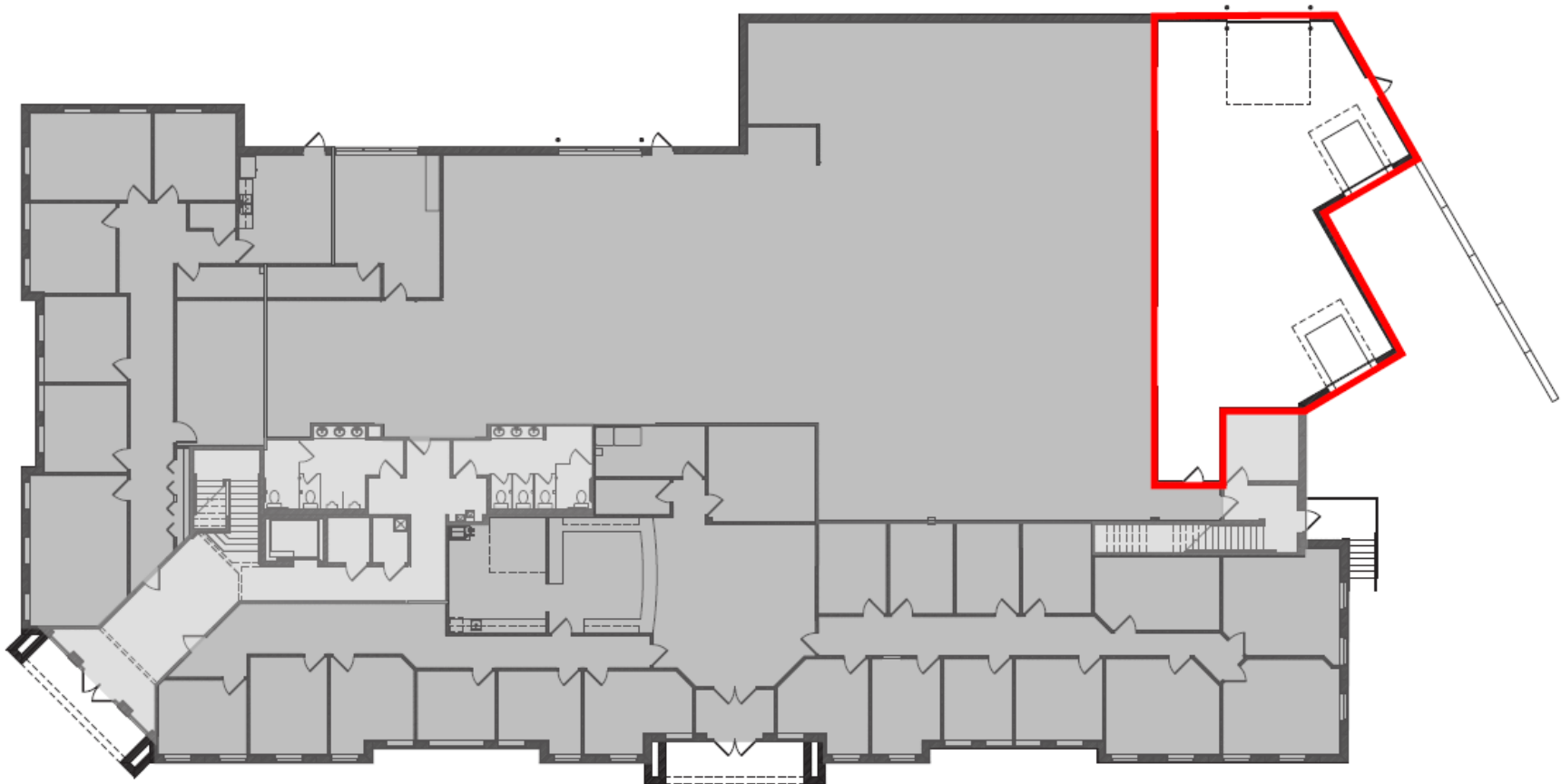
All information herein has been provided by sources we deem reliable. It is provided without any representation, warranty, or guaranty. Prospective Tenant should conduct any investigation and verification it deems material. Consult your accountant, attorney, or other professional advisors.

# American Business Center I & II

2960-2970 Judicial Road | Burnsville, MN

FOR LEASE | OFFICE/WAREHOUSE

## 2970 Judicial Warehouse



Phone: 952-890-6450 | Fax: 952-890-5476 | Web: [efhco.com](http://efhco.com)  
2999 W. County Rd. 42, Suite 206, Burnsville, MN 55306

REAL ESTATE | CONSTRUCTION | PROPERTY MANAGEMENT

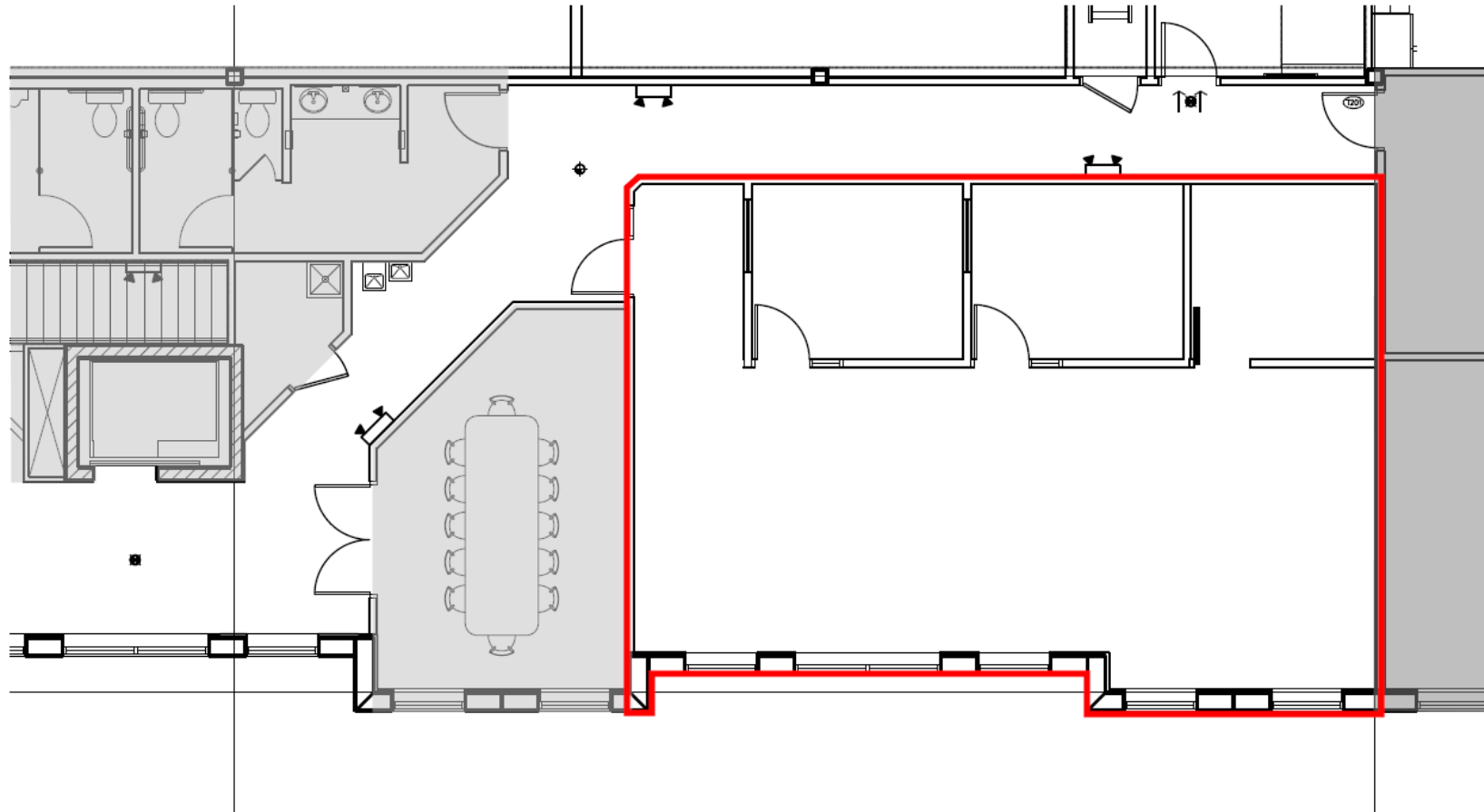
All information herein has been provided by sources we deem reliable. It is provided without any representation, warranty, or guaranty. Prospective Tenant should conduct any investigation and verification it deems material. Consult your accountant, attorney, or other professional advisors.

# American Business Center I & II

2960-2970 Judicial Road | Burnsville, MN

FOR LEASE | OFFICE/WAREHOUSE

## 2960 Judicial 2<sup>nd</sup> Level Plan



Phone: 952-890-6450 | Fax: 952-890-5476 | Web: [efhco.com](http://efhco.com)  
2999 W. County Rd. 42, Suite 206, Burnsville, MN 55306

REAL ESTATE | CONSTRUCTION | PROPERTY MANAGEMENT

All information herein has been provided by sources we deem reliable. It is provided without any representation, warranty, or guaranty. Prospective Tenant should conduct any investigation and verification it deems material. Consult your accountant, attorney, or other professional advisors.